



产品手册

PRODUCTS SELECTION

XPOMATPOH 1511 HPLC

XPOMATPOH 1511 HPLC

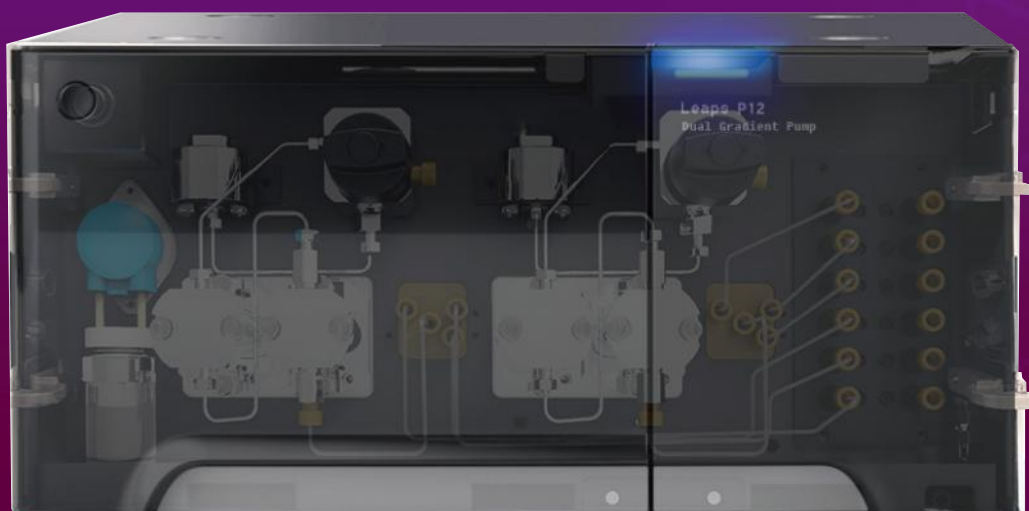


Economical and durable quality choice.

Reasonable price, stable and durable quality, it is the best choice for reducing project investment and quickly obtaining return on investment.

Pressure Delivery Beyond Conventional

- The maximum withstand pressure is 10500PSI (720 Bar), surpassing the conventional and improving the efficiency
- Pressure pulsation suppression technology, no damper required, pressure pulsation < 10 PSI
- Support multiple solvent mixing modes



Model	Performance Parameter	Weight	size
P12	Constant flow isocratic pump (10500 psi)	16 Kg	550 mm(D)× 396 mm(W)× 196 mm(H)
P20	Binary pump (10500 PSI)	19 Kg	550 mm(D)× 396 mm(W)× 196 mm(H)
P22	Binary pump (10500 PSI, 2CH degassing unit)	24 Kg	550 mm(D)× 396 mm(W)× 196 mm(H)
P40	Quaternary pump (10500 PSI, 4CH degassing unit)	18 Kg	550 mm(D)× 396 mm(W)× 196 mm(H)
P60	Dual ternary gradient pump (10500 PSI, 6CH degassing unit, ternary gradient valve)	24 Kg	550 mm(D)× 396 mm(W)× 196 mm(H)
UP25	Binary pump (16000 PSI, 2CH degassing unit, ternary gradient valve)	24 Kg	550 mm(D)× 396 mm(W)× 196 mm(H)
P10	Isocratic pump 10500 PSI / >72Mpa # Small volume	8 Kg	320 mm(D)× 135 mm(W)× 147mm(H)
P42	Quaternary pump 10500 PSI / >72Mpa、 5CH degasser	18 Kg	550 mm(D)× 396 mm(W)× 196 mm(H)

Efficient sample delivery and analysis

- Ultra-high injection repeatability, with a variety of injection modes, to ensure accurate and reliable quantitative results
- Flexible sample tray options (2*54 or 2*96 well plates) and optional sample chamber refrigeration
- Inner and outer needles comprehensively reduce sample residue to <0.0025%
- Running across sequences, the graphical sample tray selection interface makes sample injection easier to set up and analyze



Model	Performance Parameter	Weight	size
A10	Auto sampler, 9000 PSI	22 KG	550 mm(D)× 396 mm(W)× 281 mm(H))
A20	Auto sampler, 18000 PSI	22 KG	550 mm(D)× 396 mm(W)× 281 mm(H)
A50	Auto sampler, 9000 PSI, high injection volume till 1ml	22 KG	550 mm(D)× 396 mm(W)× 281 mm(H)
A60	Auto sampler, 9000 PSI, Integral-Loop	23 KG	718 mm(D)×396 mm(W)× 281 mm(H)
A65	Auto sampler, 18000 PSI, Integral-Loop	23 KG	718 mm(D)×396 mm(W)× 281 mm(H)
Manual injector	Manual injector With: 7725i, 20ul loop, valve holder, syringe.	0.5kg	130mm(D)×185 (W) ×95mm(H)
A10C	Auto sample Inhalation 9000PSI, Standard # with cooling function	26 kg	718 mm(D)×396 mm(W)× 281 mm(H)
A20C	Auto sample Inhalation 18000PSI # cooling function	26 kg	718 mm(D)×396 mm(W)× 281 mm(H)
A50C	Auto sample Inhalation 9000 PSI, Mass injection 1mL # cooling function	26 kg	718 mm(D)×396 mm(W)× 281 mm(H)
A60C	Auto sampler Integral-Loop 9000 PSI, 4X sample tray, 100uL quantitative pump # cooling function	24 kg	718 mm(D)×396 mm(W)× 281 mm(H)
A65C	Auto sampler Integral-Loop Integral-Loop, 4X sample tray, 100uL quantitative pump # cooling function	24 kg	718 mm(D)×396 mm(W)× 281 mm(H)

Accurate and fast temperature control system

- Large-capacity column oven, which can accommodate four 300mm long chromatographic columns
- Forced air circulation design, maintain $\pm 0.1^{\circ}\text{C}$, making the temperature field more uniform
- Recording of column usage information to ensure compliance with regulatory guidelines



Model	Performance Parameter	Weight	size
C10	Column oven Ambient+5 $^{\circ}\text{C}$ -85 $^{\circ}\text{C}$	15 Kg	543 mm(D) \times 150 mm(W) \times 475 mm(H)
C15	Column oven Ambient+5 $^{\circ}\text{C}$ -85 $^{\circ}\text{C}$, 0.003 inch tubing	15 Kg	543 mm(D) \times 150 mm(W) \times 475 mm(H)
C12	Column oven 4 $^{\circ}\text{C}$ -85 $^{\circ}\text{C}$	17 Kg	543 mm(D) \times 150 mm(W) \times 475 mm(H)
C16	Column oven 4 $^{\circ}\text{C}$ -85 $^{\circ}\text{C}$, 0.003 inch tubing	17 Kg	543 mm(D) \times 150 mm(W) \times 475 mm(H)

Excellent detection performance get more reliable results

Diode-array Detector

1024 Pixels, wavelength 190~800nm; eliminate background noise, shift calibration function

- optional split width is 1.2nm and 8nm, output high resolution spectroscopy, more accurate monitor data
- 12 channels wavelength can be monitored, every channel sample wavelength, sample bandwidth, reference wavelength and bandwidth are option.
- 3D spectrogram monitoring, peak purity calculating function



UV-VIS Detector

Optical path switch automatically, wavelength is 190~900nm

- Up to 100Hz data acquisition rate, even extremely narrow peaks can be monitored.
- A linear range of 2.5au is equally adept for high concentration samples
- Standard wavelength time program, wavelength switching detection
- The module is easy to maintain, the light source replacement is convenient, and multiple flow pools can be selected



Model	Performance Parameter	Weight	size
D08	UV-vis detector 190nm-640nm	15 Kg	550 mm(D)× 396 mm(W)× 196 mm(H)
D10	UV VIS Detector 190nm-900nm	15 Kg	550 mm(D)× 396 mm(W)× 196 mm(H)
D15	UV VIS Detector 190nm-900nm	15 Kg	550 mm(D)× 396 mm(W)× 196 mm(H)
D20	Diode Array Detector 190nm-640nm	18 Kg	550 mm(D)× 396 mm(W)× 196 mm(H)
D22	Diode-array Detector 1024 pixels 190nm-800nm	18 Kg	550 mm(D)× 396 mm(W)× 196 mm(H)
D23	Diode-array Detector 1024 pixels 190nm-640nm	18 Kg	550 mm(D)× 396 mm(W)× 196 mm(H)
D24	Diode-array Detector 1024 pixels 190nm-800nm	18 Kg	550 mm(D)× 396 mm(W)× 196 mm(H)
D25	Diode Array Detector 190nm-640nm Variable slit	18 Kg	550 mm(D)× 396 mm(W)× 196 mm(H)

Premium Column Performance Ensure stable and efficient separation

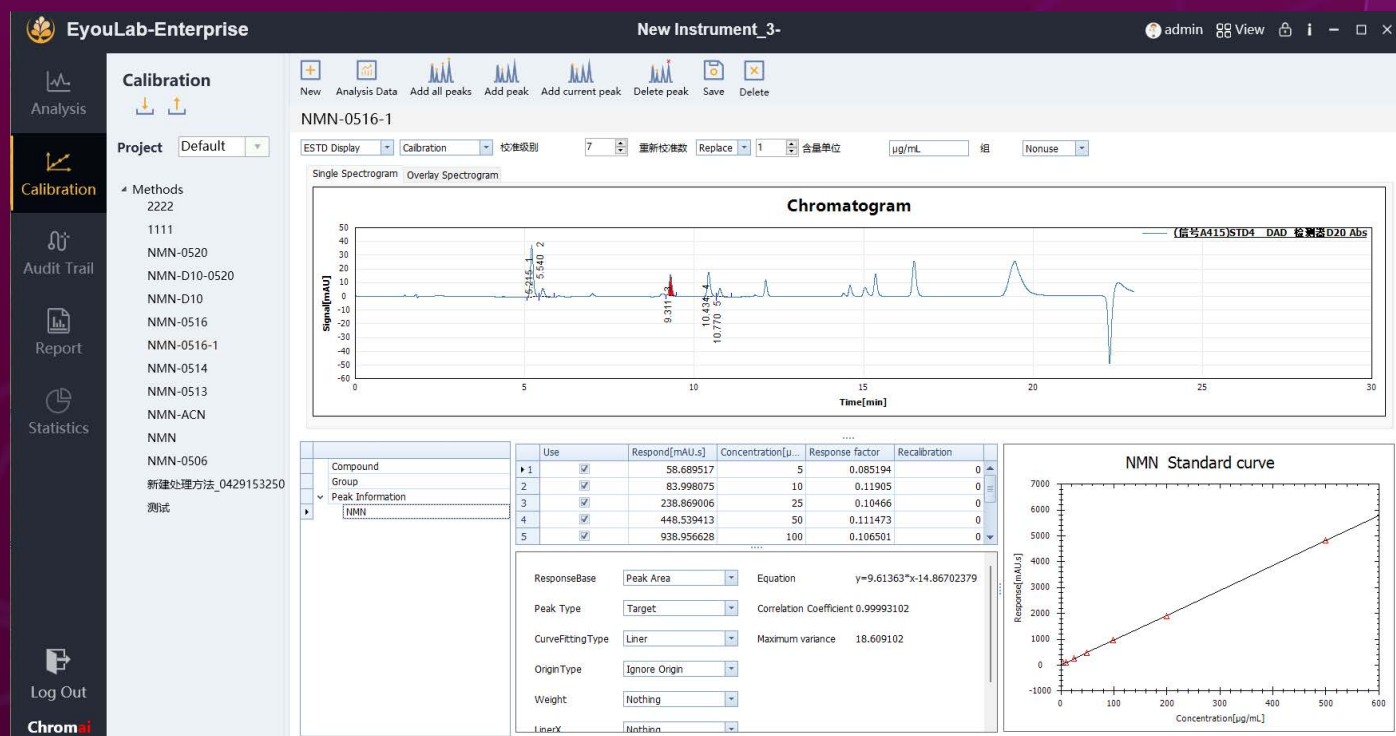
Diode-array Detector

- UVTech columns are made of imported high-quality fillers and manufactured in an industry-leading GMP approach. The excellence in column filling technology further guarantees quality and stability.
- With high specific surface area and high carbon content, excellent retention capacity and high sample loading capacity
- The bonding density of functional groups is specially set to balance the polarity of the filler surface, which has both high hydrophobicity and high polarity
- Using a novel endcapping technology, the surface silanol groups are reduced to an undetectable level. In the analysis of basic compounds, excellent peak shape can be obtained, and at the same time, it has better durability



EyouLab CDS

The new generation EyouLab intelligent chromatographic data system is based on database technology for efficient and comprehensive management, fully complying with regulatory compliance requirements such as FDA 21CFR Part 11, GMP, GLP, etc. It has rich and powerful instrument control functions, and has been extended to sample pretreatment and precision medical fields. Through dozens of proprietary technologies, the controlled instruments have intelligent interaction, refined processes, and powerful data analysis capabilities, which can effectively guide customers to ensure that the required data can be effectively and accurately completed through simple operations. EyouLab provides multiple versions of deployment, including standalone, enterprise network, and cloud service versions, which can greatly enhance the overall capabilities of customer application laboratories. Through visual dashboards, data monitoring and management, online diagnosis and maintenance, and method library interaction calls can be achieved. Intelligent and user-friendly, reducing errors, and improving overall laboratory efficiency





Contact

UVTech

Add: 2nd Floor, Building 3, No. 1 Chaoqian Rd, Changping, Beijing, China PRC.

TEL:18613365565

MAIL: info@uvtech-cc.com